

Note: Nominal 18 x 45mm batten blocks 100 maximum may be used providing a minimum of 50mm clearance is left between members

Nominal 18 x 45mm vertical battens @ 600mm maximum centres

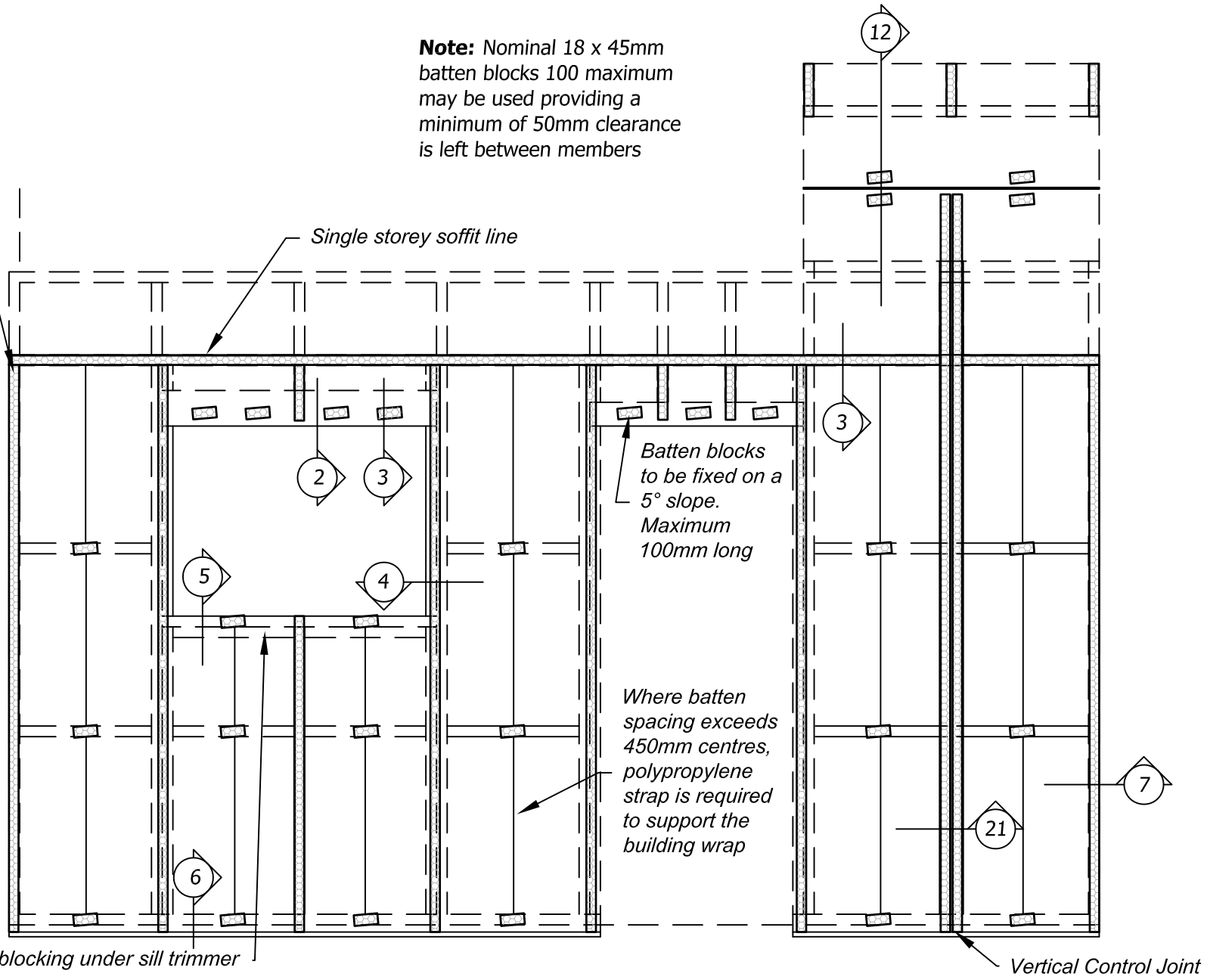
Single storey soffit line

Batten blocks to be fixed on a 5° slope. Maximum 100mm long

Where batten spacing exceeds 450mm centres, polypropylene strap is required to support the building wrap

Timber blocking under sill trimmer

Vertical Control Joint



Title: **Cavity Layout**

Date: April 2014

Scale: N.T.S

Detail No. SP 1-0

This drawing must be read in conjunction with the Superpol Cladding Design Guide