

Apron panel wall to roof junction - perpendicular to roof slope

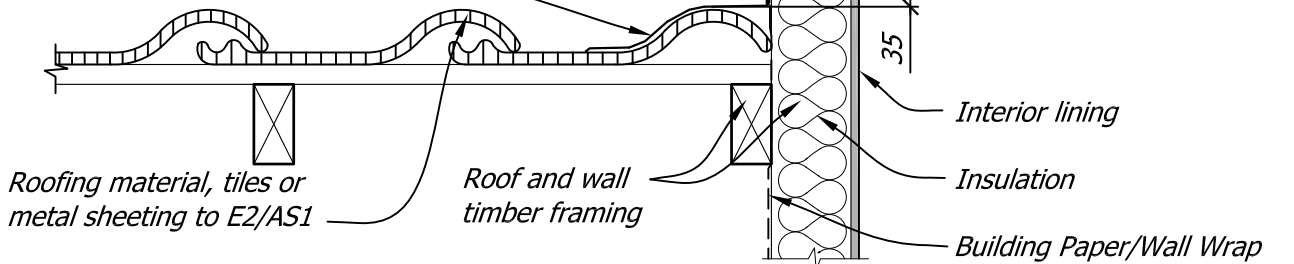
Supercrete™ Coating System

14 - 10 bugle head screw
65mm for 50mm panels
90mm for 75mm panels

50 x 50 x 1.5mm minimum cavity closure
angle bent to suit angle of panel. Fix at
600mm centres with 12 - 11 x 25mm
hex. head screws

Bottom coated with Supercoat™ Tanking
Membrane

Flashing to suit roofing material, upstand
of flashing to be 110mm long



Apron panel wall to roof junction - parallel with roof slope

NOTE: Base angle to temporarily support panel and to close batten space

<p>Supercrete™</p> <p>PANEL CLADDING CONSTRUCTION</p>	Title: Roof Apron Flashings	
	Date: February 2014	Detail No. SPC 5-6
	This drawing must be read in conjunction with the Supercrete Panel Cladding System Design & Installation Guide	