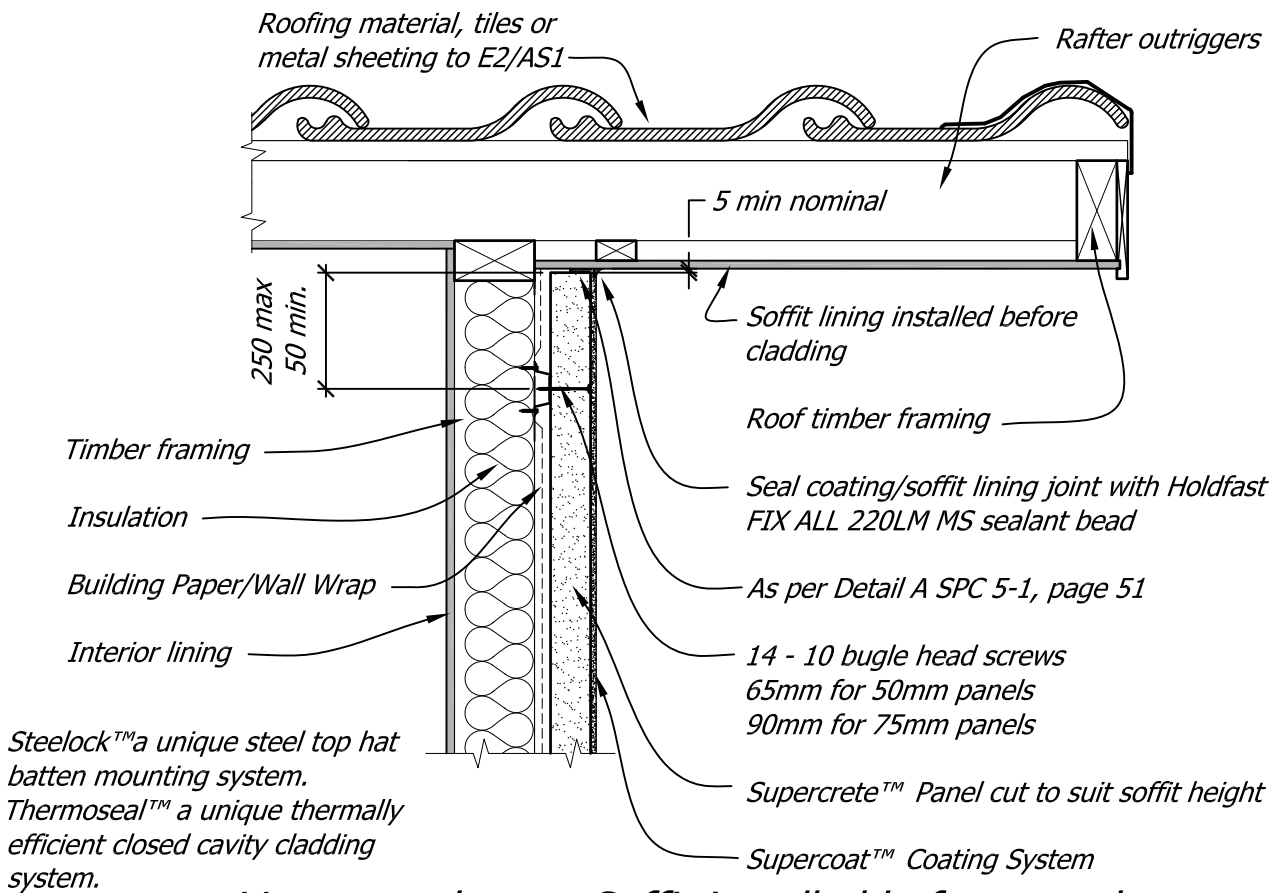


Verge overhang - Soffit installed after panel



Verge overhang - Soffit installed before panel

Supercrete™

Title:

Verge Overhangs

**PANEL CLADDING
CONSTRUCTION**

Date: February 2014

Detail No. **SPC 5-12**

This drawing must be read in conjunction with the Supercrete Panel Cladding System Design & Installation Guide