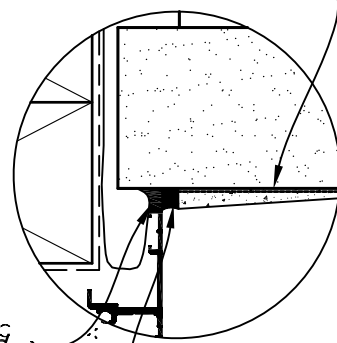


Supercoat™ pre-meshed render stop glued to panel with Holdfast FIX ALL 220LM MS. Adhere mesh around corner as required



Initial gap between joinery and panel filled with sealant prior to placement of Supercoat™ pre-meshed render stop

Gap between joinery and bottom of Supercoat™ pre-meshed render stop filled with sealant (Holdfast FIX ALL 220LM MS)

*Steelock™ a unique steel top hat batten mounting system.
Thermoseal™ a unique thermally efficient closed cavity cladding system.*

NOTE:

This option can be used where deeper reveals are required or for a retrofit where the existing windows do not extend sufficiently past the framing to cover the batten space

Copyright © Superbuild International Ltd 2013

Supercrete™

Title:

Window Jamb Facing Block Option

**PANEL CLADDING
CONSTRUCTION**

Date: February 2014

Detail No. SPC 4-6

This drawing must be read in conjunction with the Supercrete Panel Cladding System Design & Installation Guide