

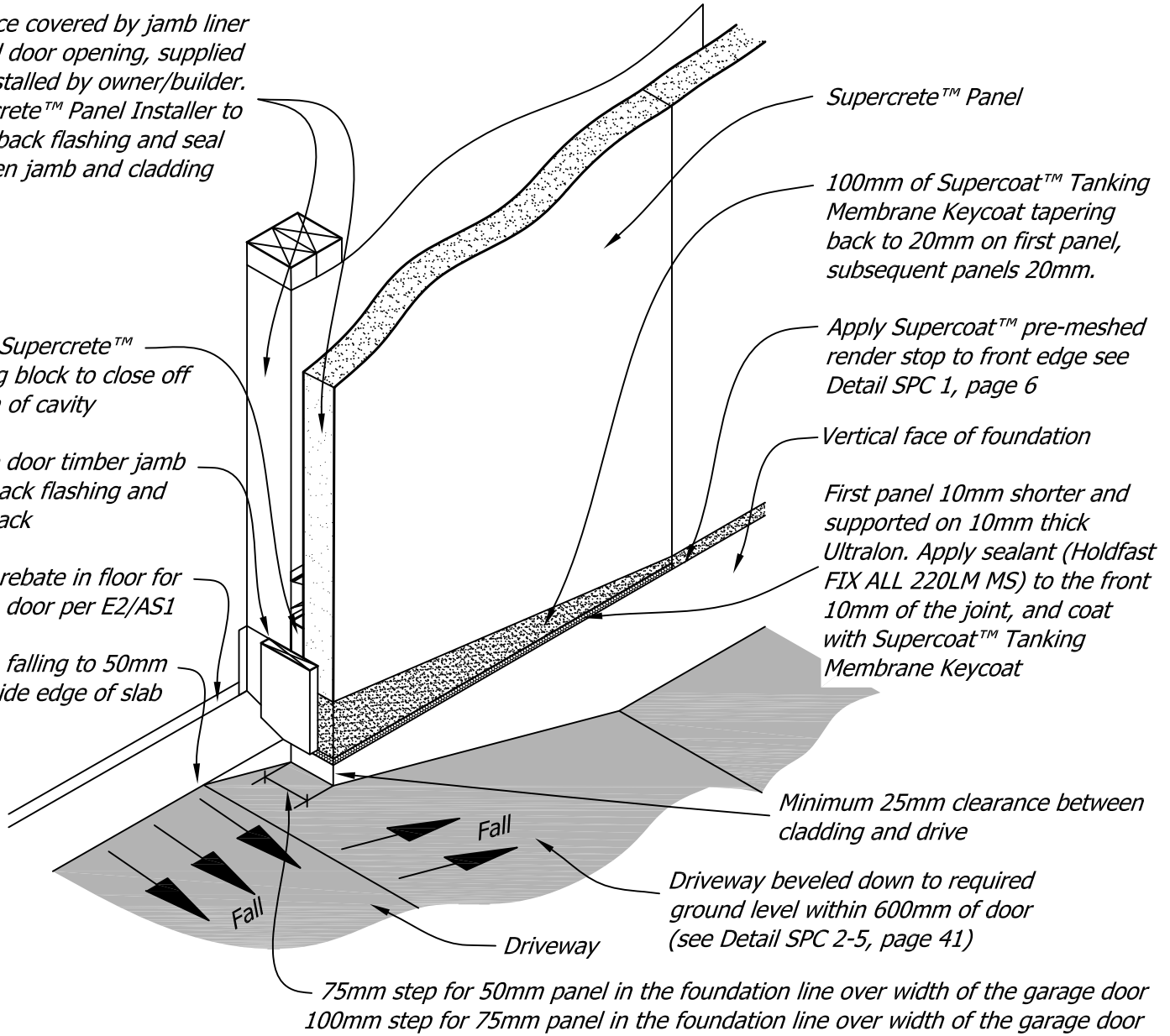
This face covered by jamb liner around door opening, supplied and installed by owner/builder. Supercrete™ Panel Installer to install back flashing and seal between jamb and cladding

25mm Supercrete™ packing block to close off bottom of cavity

Garage door timber jamb liner, back flashing and door track

20mm rebate in floor for garage door per E2/AS1

Rebate falling to 50mm at outside edge of slab



NOTE:

The requirement to have a 75mm step in the concrete along with an Ultralon™ EVA 60 backed, sealed base joint for the panel either side of the garage door, as shown above, is only for situations where the panel sits in a rebate (ie Detail SPC 2-5, page 41) and is not required where the Supercrete™ Panel runs past the slab edge and sits on a base angle (ie Detail SPC 2-4, page 39)

Steelock™ a unique steel top hat batten mounting system.
Thermoseal™ a unique thermally efficient closed cavity cladding system.

Copyright © Superbuild International Ltd 2013

Supercrete™	Title: Garage Door Base Detail		
	Date: February 2014	Scale: N.T.S.	Detail No. SPC 4-11
PANEL CLADDING CONSTRUCTION			
This drawing must be read in conjunction with the Supercrete Panel Cladding System Design & Installation Guide			