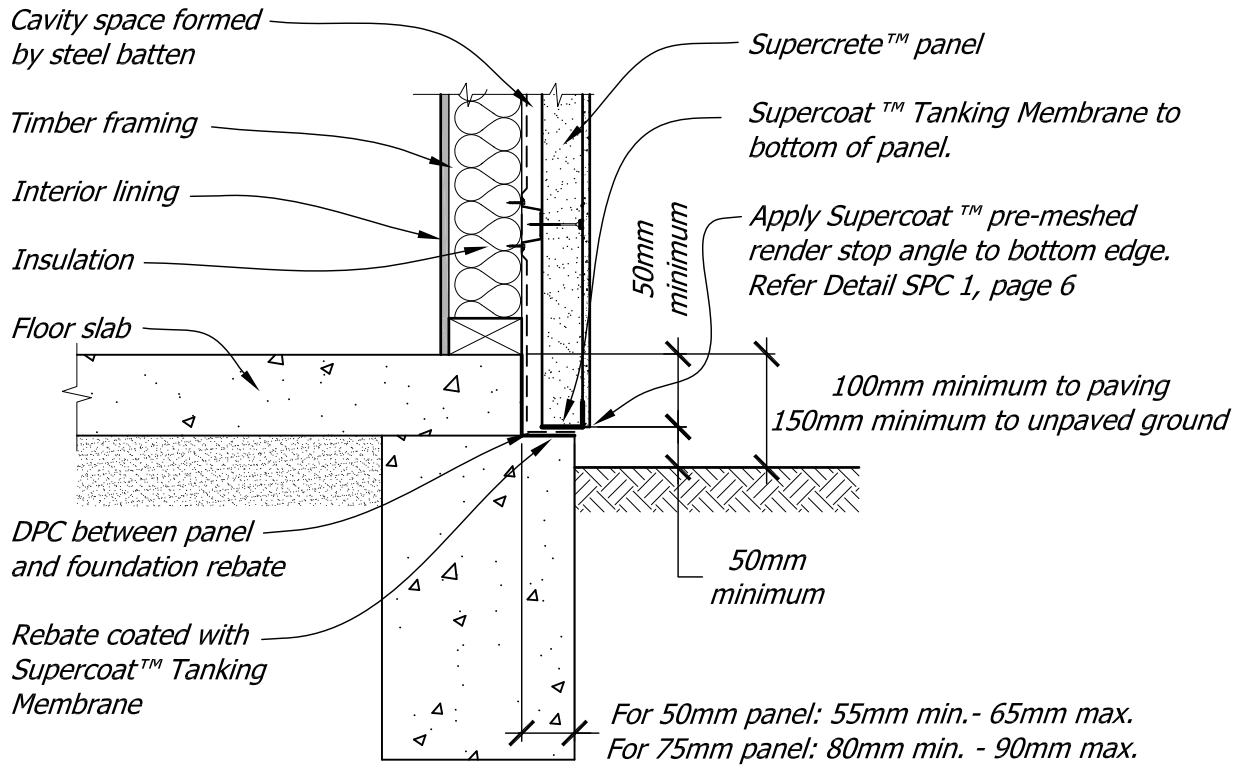


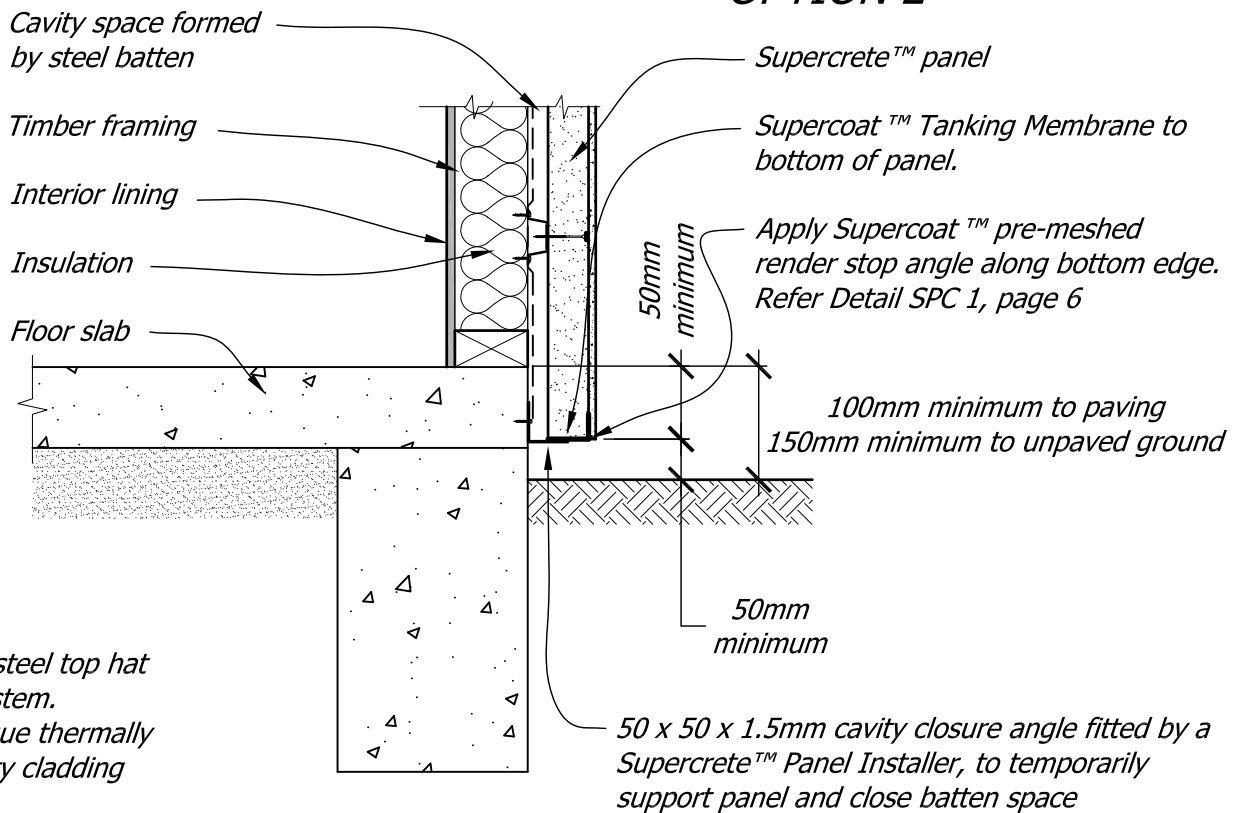
OPTION 1



NOTE:

Panel must have a 10mm drip edge minimum and 20mm maximum.
Rebate depth shall be 50mm minimum and 120mm maximum. If additional fixing is required it will be provided as shown in Detail SPC 2-4, page 39

OPTION 2



Steelock™ a unique steel top hat batten mounting system.
Thermoseal™ a unique thermally efficient closed cavity cladding system.

Copyright © Superbuild International Ltd 2013

Supercrete™

Title: Ground Clearance to Base Rebate and Floor Level

**PANEL CLADDING
CONSTRUCTION**

Date: February 2014

Scale: N.T.S.

Detail No. SPC 2-5

This drawing must be read in conjunction with the Supercrete Panel Cladding System Design & Installation Guide