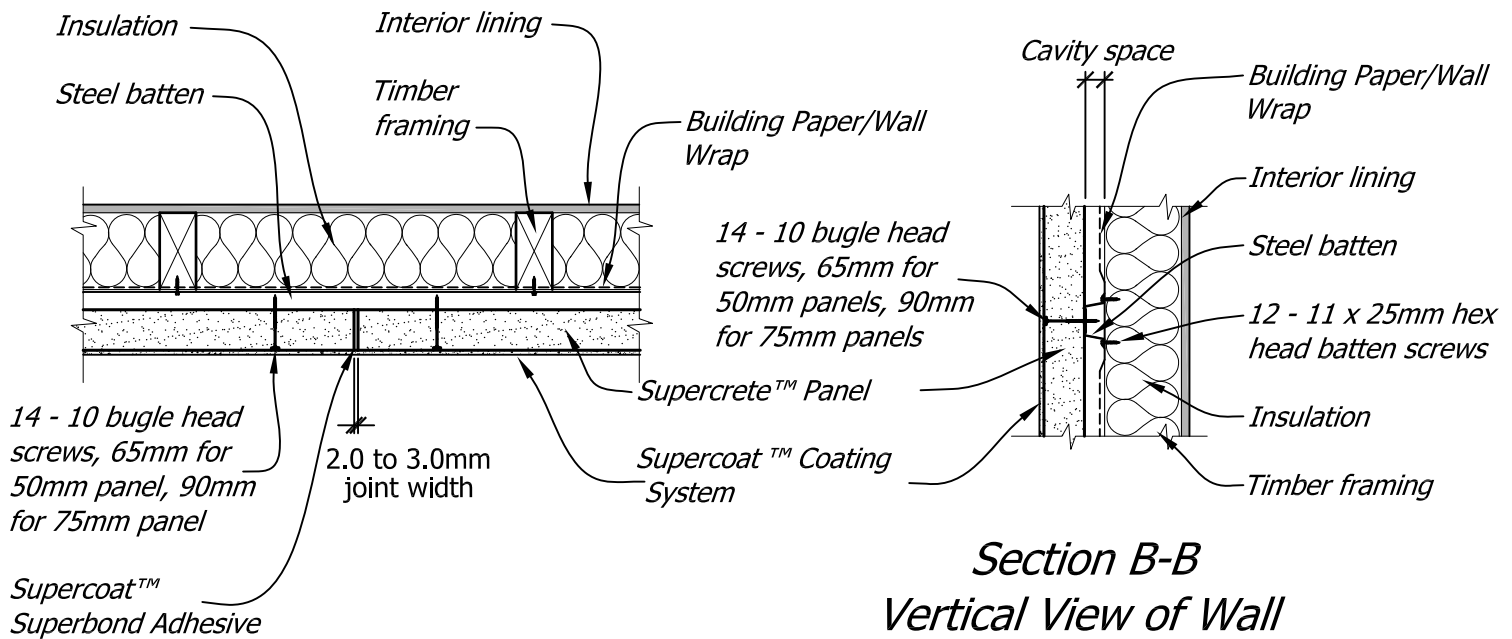


## Panel Fixing Details

**NOTE:** Batten spacing and screw fixing spacing is determined by the Supercrete™ Distributor



### Section A-A

### Horizontal View of Wall

### Section B-B

### Vertical View of Wall

Steelock™ a unique steel top hat batten mounting system.  
Thermoseal™ a unique thermally efficient closed cavity cladding system.

Copyright © Superbuild International Ltd 2013

**Supercrete™**

Title:

Panel Fixing Details

**PANEL CLADDING  
CONSTRUCTION**

Date: February 2014

Scale: N.T.S.

Detail No. SPC 1-7

This drawing must be read in conjunction with the Supercrete Panel Cladding System Design & Installation Guide