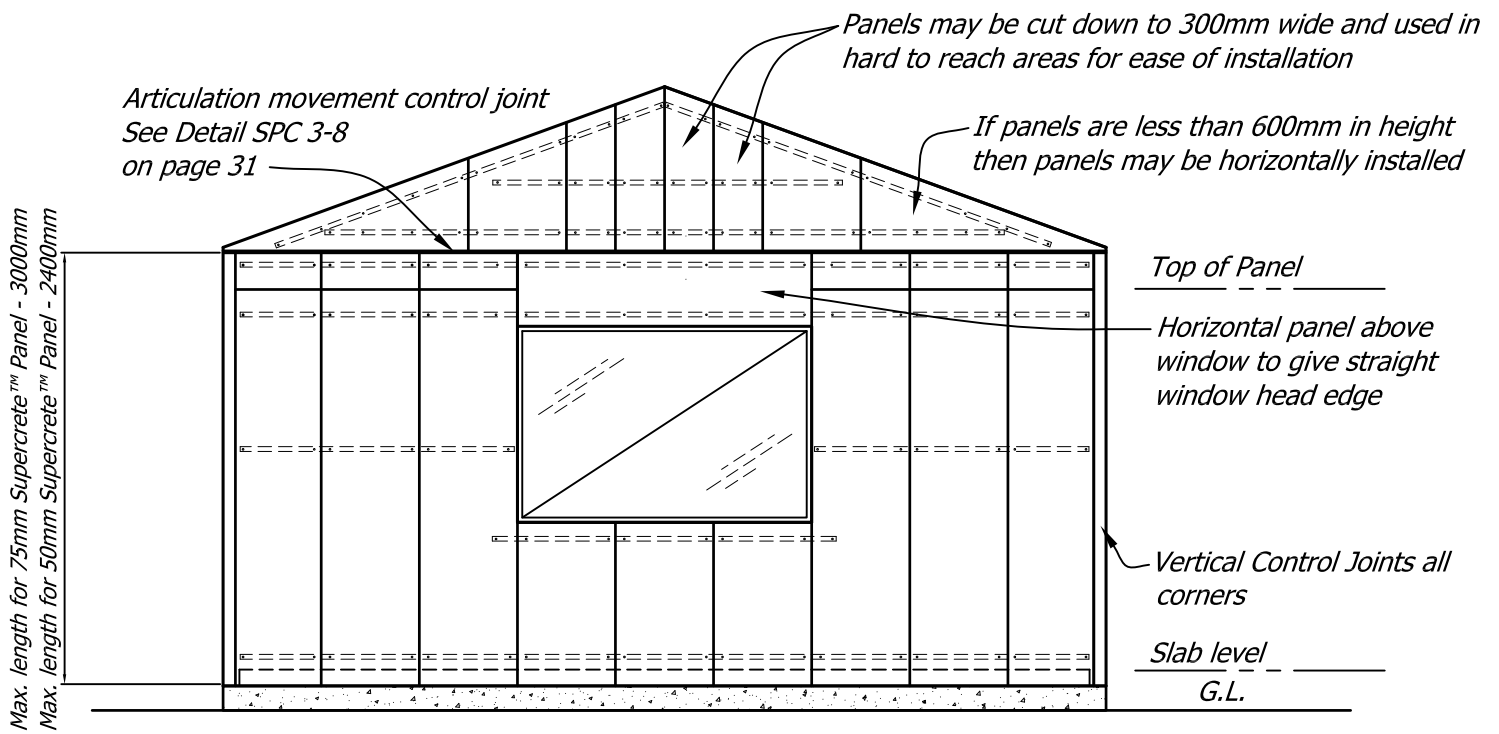
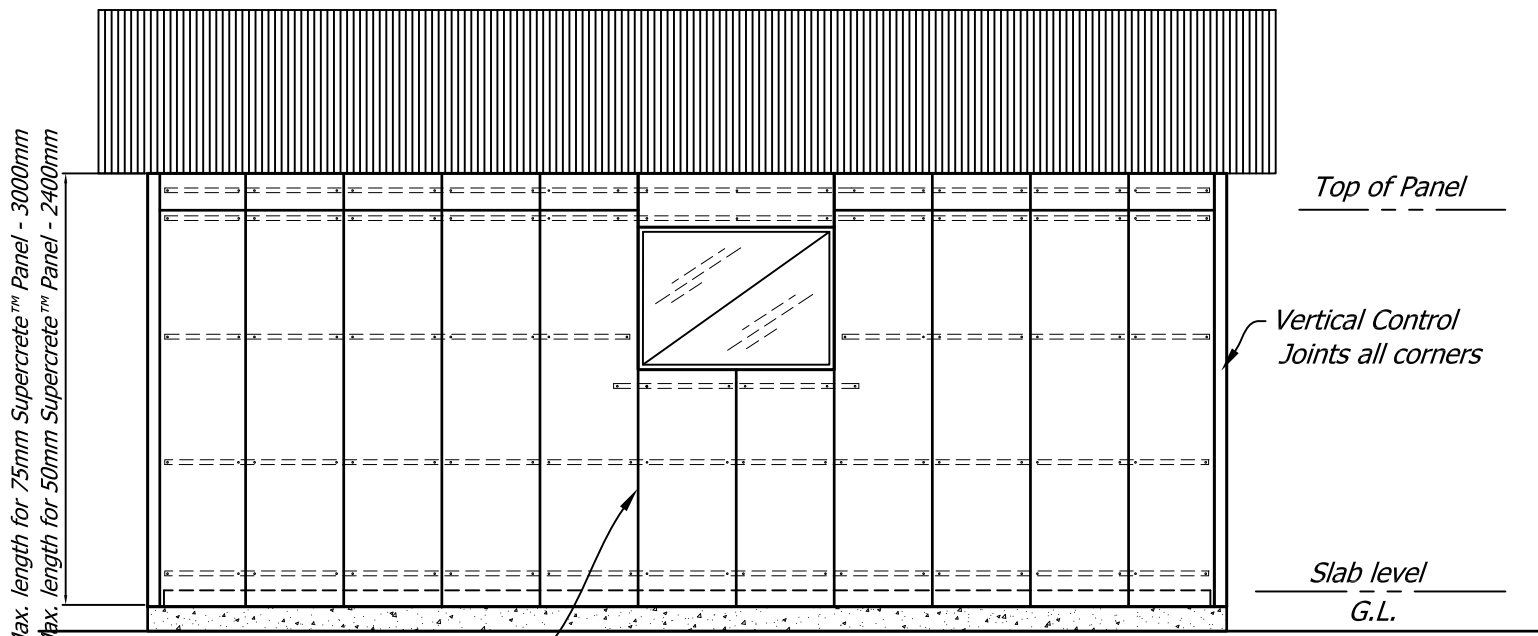


**NOTE:**

All battening and panel installation is performed by trained and registered Supercrete™ Panel Installers. These details are shown for general information purposes only



**Gable End Elevation**



Recommended location of vertical Control Joint

**Side/Eaves Elevation**

Copyright © Superbuild International Ltd 2013

**NOTE:**

1. The Supercrete™ Distributor determines the number of battens and batten spacing using wind and earthquake load information provided by the building owner
2. Vertical control joints not shown on these details. Refer to Section 2.2.2.1, page 25 for control joint locations. Building owner to specify control joint locations on the project construction drawings.

Steelock™ a unique steel top hat batten mounting system.  
Thermoseal™ a unique thermally efficient closed cavity cladding system.

**Supercrete™**

Title: Single Storey Construction Details

**PANEL CLADDING CONSTRUCTION**

Date: February 2014

Scale: N.T.S.

Detail No. SPC 1-3

This drawing must be read in conjunction with the Supercrete Panel Cladding System Design & Installation Guide