

$\phi 12$ vertical rods 200mm away from control joint grouted into $\phi 50$ mm drilled holes

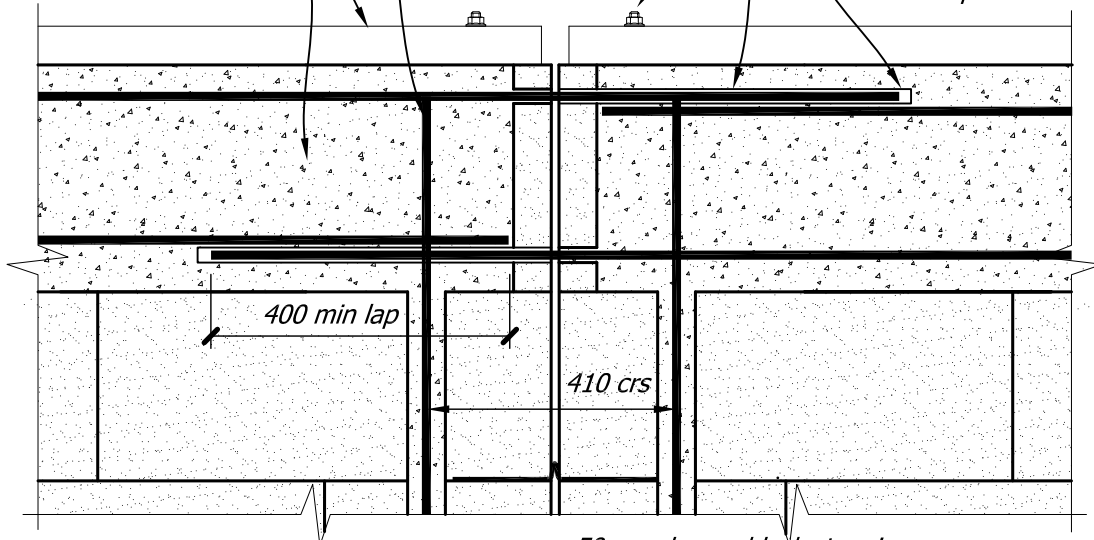
Timber top plate

2/D12 bars or as specified by structural engineer for specific job

M12 bolts @ 1.2m crs

Greased PVC conduit sleeve, or Denso tape (or similar) for de-bonding

Polystyrene plug on end of rod for compression



50mm panel or closure block

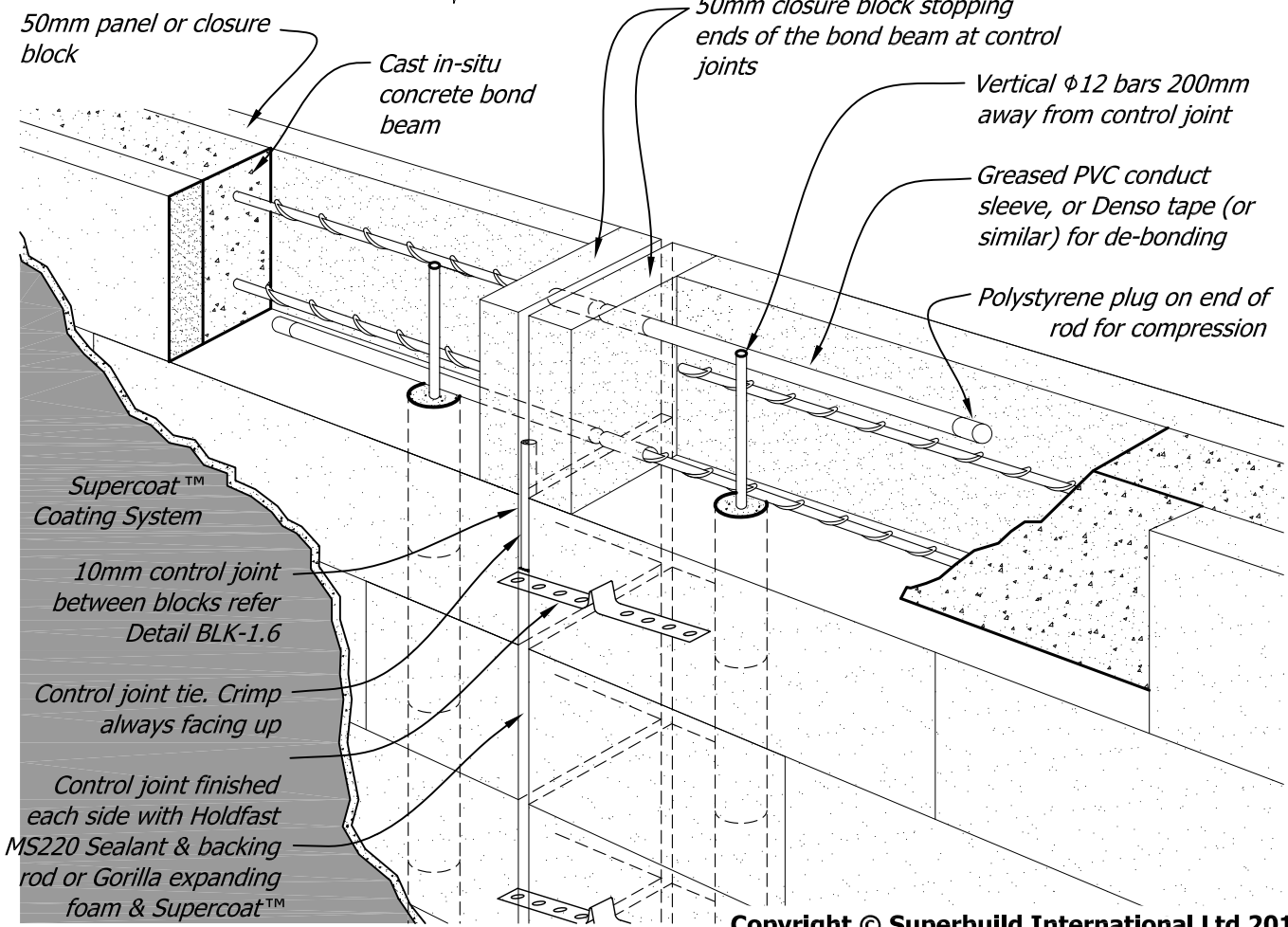
Cast in-situ concrete bond beam

50mm closure block stopping ends of the bond beam at control joints

Vertical $\phi 12$ bars 200mm away from control joint

Greased PVC conduit sleeve, or Denso tape (or similar) for de-bonding

Polystyrene plug on end of rod for compression



Supercoat™ Coating System

10mm control joint between blocks refer Detail BLK-1.6

Control joint tie. Crimp always facing up

Control joint finished each side with Holdfast MS220 Sealant & backing rod or Gorilla expanding foam & Supercoat™ plastic control joint bead

Copyright © Superbuild International Ltd 2013

Supercrete™

Title:

Movement Control Joint Through Bond Beam

BLOCK CONSTRUCTION

Date: **September 2013**

Scale: **1:10 & N.T.S.**

Detail No. **BLK- 5.1**

This drawing must be read in conjunction with the Supercrete Block Design Guide