

Selected Supercoat™ Coating system or plasterboard linings

INTERIOR

Supercrete™ blocks fixed together with 1.5 - 3.5mm nominal Supercoat™ Superbond Adhesive

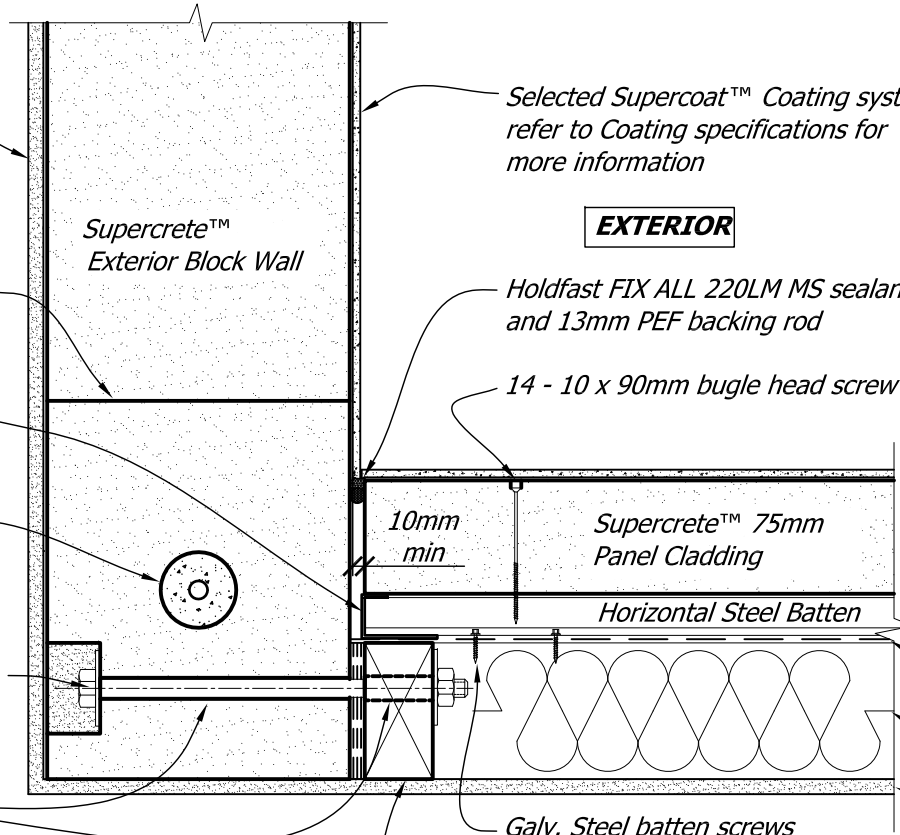
Zincalume or galvanized channel flashing to close cavity space

50mm ϕ holes drilled in each course of Supercrete™ block work to form a concrete core for ϕ 12 vertical reinforcing rods @ 1000mm crs max

M12 bolt fixed through Supercrete™ block wall with 50mm square washer and head countersunk into block wall.

Oversize holes, 14mm in Supercrete™ Block wall & 16mm in ex. 100 x 50 timber stud to allow for differential movement

ex 100 x 50 timber framing on 3 layers of DPC to allow for movement between timber frame & Supercrete™ Block wall



Selected Supercoat™ Coating system. refer to Coating specifications for more information

EXTERIOR

Holdfast FIX ALL 220LM MS sealant and 13mm PEF backing rod

14 - 10 x 90mm bugle head screw

10mm min

Supercrete™ 75mm Panel Cladding

Horizontal Steel Batten

Building wrap

Insulation

Plasterboard interior linings

Galv. Steel batten screws

INTERIOR

Copyright © Superbuild International Ltd 2013

Supercrete™

Title:

Plan of Supercrete™ Block to Supercrete™ Panel Cladding Corner Joint

BLOCK CONSTRUCTION

Date: **September 2013**

Scale. **1 : 5**

Detail No. **BLK -3.3**

This drawing must be read in conjunction with the Supercrete Block Design Guide