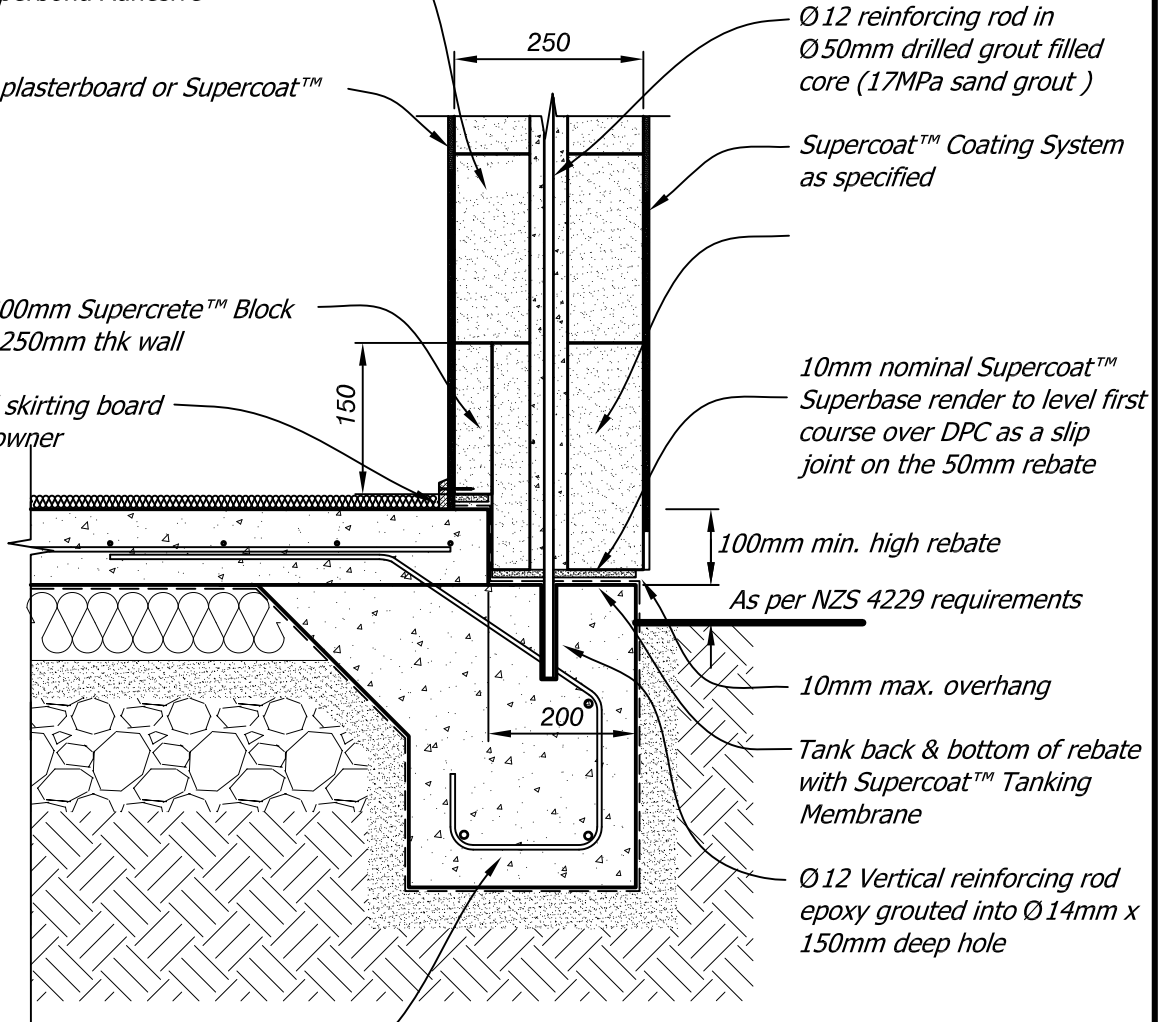


600 x 250 x 250mm Supercrete™ Blocks  
glued together with 2-3mm nominal  
Supercoat™ Superbond Adhesive

Internal linings plasterboard or Supercoat™  
Coating System

ex 600 x 50 x 300mm Supercrete™ Block  
packer to form 250mm thk wall

Floor finish and skirting board  
as selected by owner



Ø12 reinforcing rod in  
Ø50mm drilled grout filled  
core (17MPa sand grout )

Supercoat™ Coating System  
as specified

10mm nominal Supercoat™  
Superbase render to level first  
course over DPC as a slip  
joint on the 50mm rebate

100mm min. high rebate

As per NZS 4229 requirements

10mm max. overhang

Tank back & bottom of rebate  
with Supercoat™ Tanking  
Membrane

Ø12 Vertical reinforcing rod  
epoxy grouted into Ø14mm x  
150mm deep hole

Reinforced concrete slab & foundation  
footing to NZS 4229 or engineer's drawings  
& specifications

Copyright © Superbuild International Ltd 2013

**Supercrete™**

Title: **Type 5 Foundation Detail**

**BLOCK CONSTRUCTION**

Date: **September 2013**

Scale: **1:10**

Detail No. **BLK 2.6**

This drawing must be read in conjunction with the Supercrete Block Design Guide